

HIGH INDUCTION LONG THROW DIFFUSERS FOR DEEP JET

PERFORMANCES

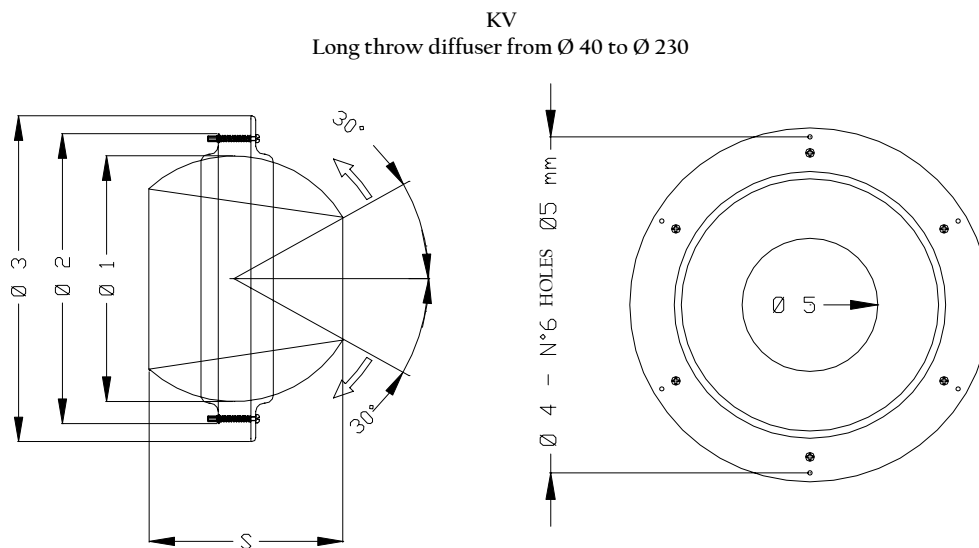
KV
SERIES

TECHNICAL DATA : High induction long throw diffuser with adjustable directional jet to operate for heights from 2,80 to 30 meters.

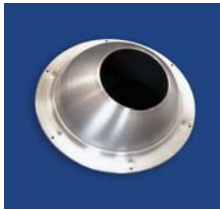
FINISH: KV in aluminium - KVR painted white epoxy in powder finish RAL 9010 - plates painted white epoxy in powder finish RAL 9010 .

MATERIALS: KV e KVR manufactured from aluminum sheet - plates manufactured from galvanized sheet steel.

FITTING: With front screws (not supplied) directly to the channel or to the plenum.



Model	Ø 1	Ø 2	Ø 3	Ø 4	Ø 5	N° holes	S
40	80	109	135	119	40	3	56
50	102	132	166	148	50	3	78
80	160	203	254	220	80	3	131
150	300	350	387	368	150	6	233
200	400	448	485	472	200	6	308
230	400	448	485	472	230	6	308



HIGH INDUCTION LONG THROW DIFFUSERS FOR DEEP JET

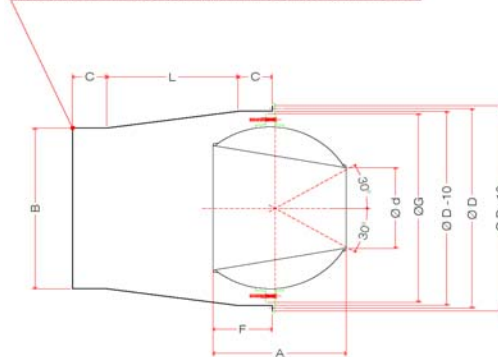
PERFORMANCES

KV SERIES

KV-RF

Plenum for flexible duct connection

RACCORDO PER TUBO FLESSIBILE/FLEXIBLE HOSE CONNECTION

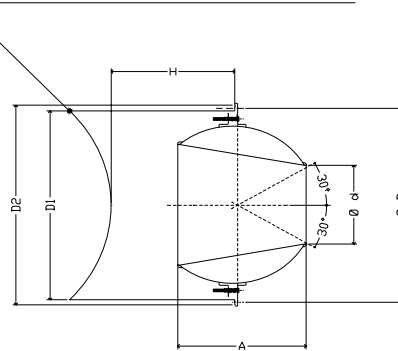


Model	Ø D [mm]	Ø d [mm]	A [mm]	F [mm]	B [mm]	Ø G [mm]	L [mm]	C [mm]
KV-RF040	119	40	56	22	78	109	100	60
KV-RF050	148	50	78	30	98	132	100	60
KV-RF080	220	80	131	57	158	203	100	60
KV-RF150	368	150	233	103	298	350	230	60
KV-RF200	472	200	308	141	398	448	230	60
KV-RF230	472	230	308	141	398	448	230	60

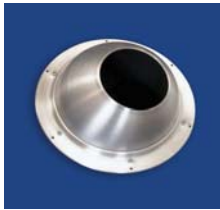
KV-RC

Plenum for circular duct connection

RACCORDO PER CANALE CIRCOLARE/ RING HEARTH CONNECTION



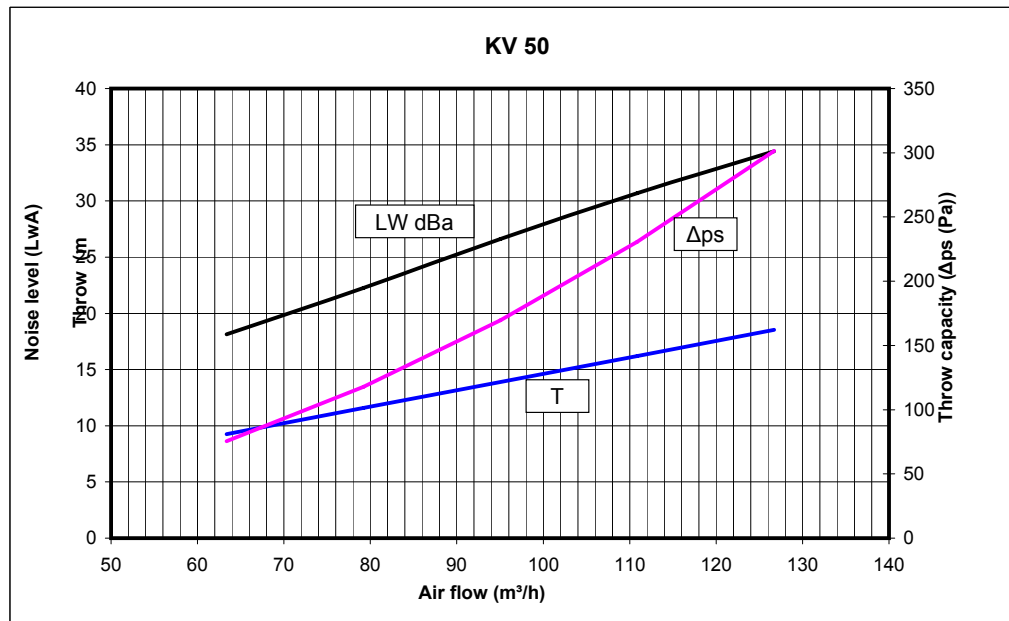
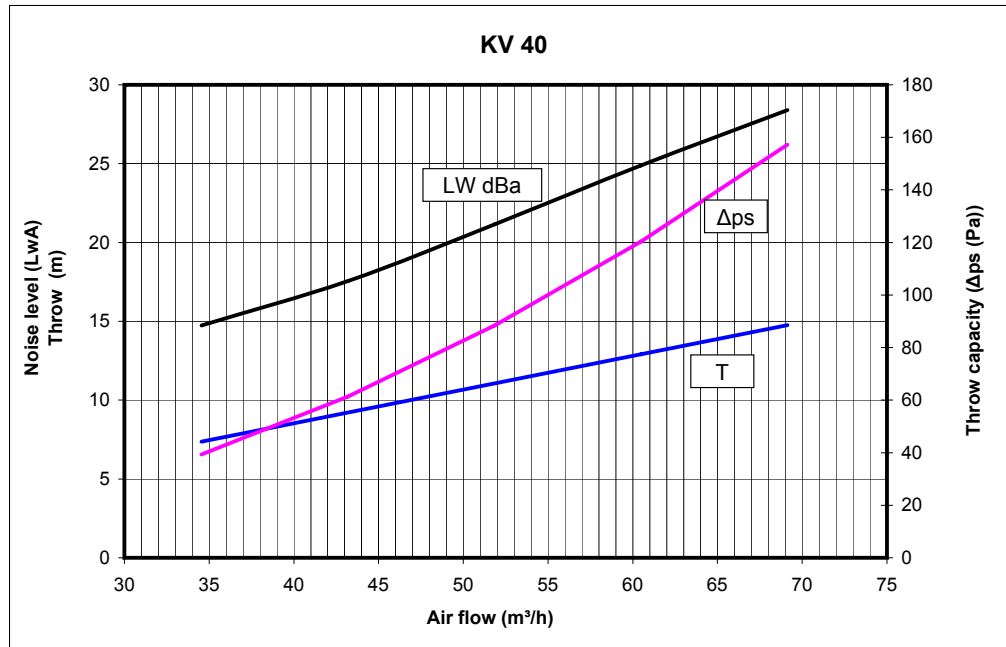
Model	nr holes	Ø holes [mm]	Ø D [mm]	Ø d [mm]	A [mm]	Ø D1 [mm]	Ø D2 [mm]	H [mm]	Ø duct min-max [mm]
KV-RC040	3	4,2	119	40	56	109	129	150	160-450
KV-RC050	3	4,2	148	50	78	138	158	150	200-500
KV-RC080	3	5,0	220	80	131	210	230	200	315-630
KV-RC150	6	5,0	368	150	233	358	378	300	500-800
KV-RC200	6	5,0	472	200	308	460	480	350	500-1000
KV-RC230	6	5,0	472	230	308	460	480	320	500-1000



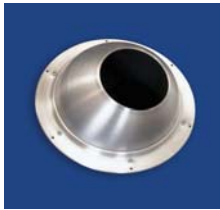
**HIGH INDUCTION LONG THROW DIFFUSERS
FOR DEEP JET**

PERFORMANCES

**KV
SERIES**



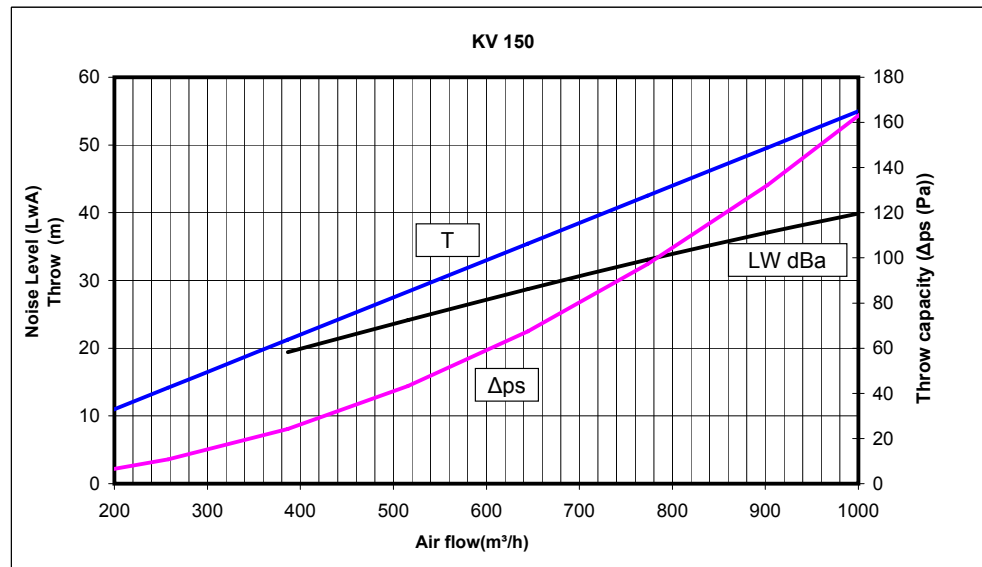
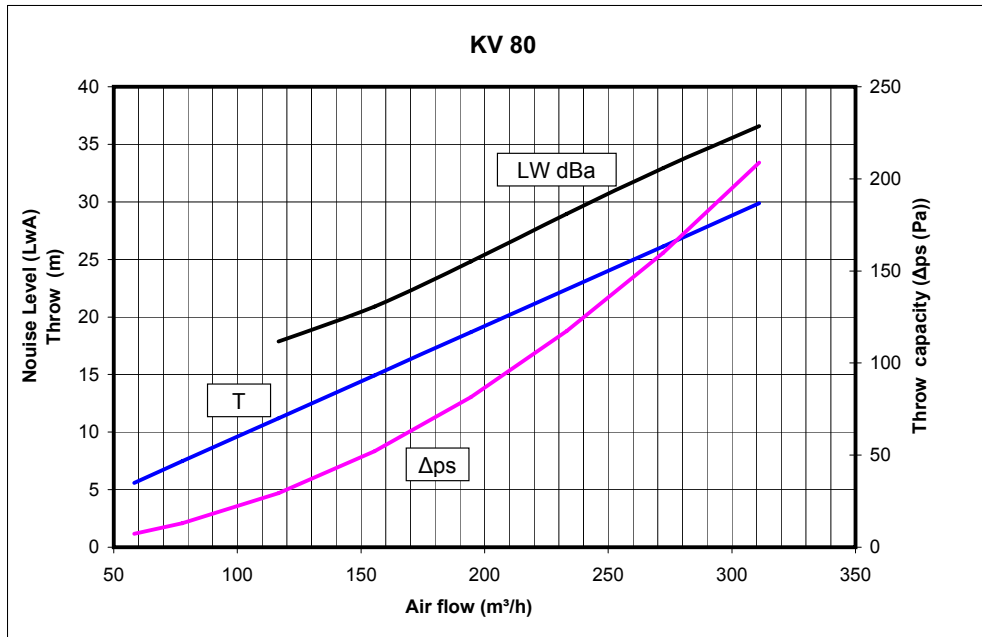
The throw (T) is calculated by the terminal speed of 0.30 m/s in isothermal conditions.



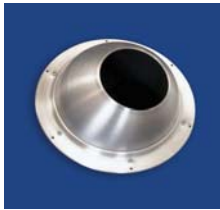
**HIGH INDUCTION LONG THROW DIFFUSERS
FOR DEEP JET**

**KV
SERIES**

PERFORMANCES



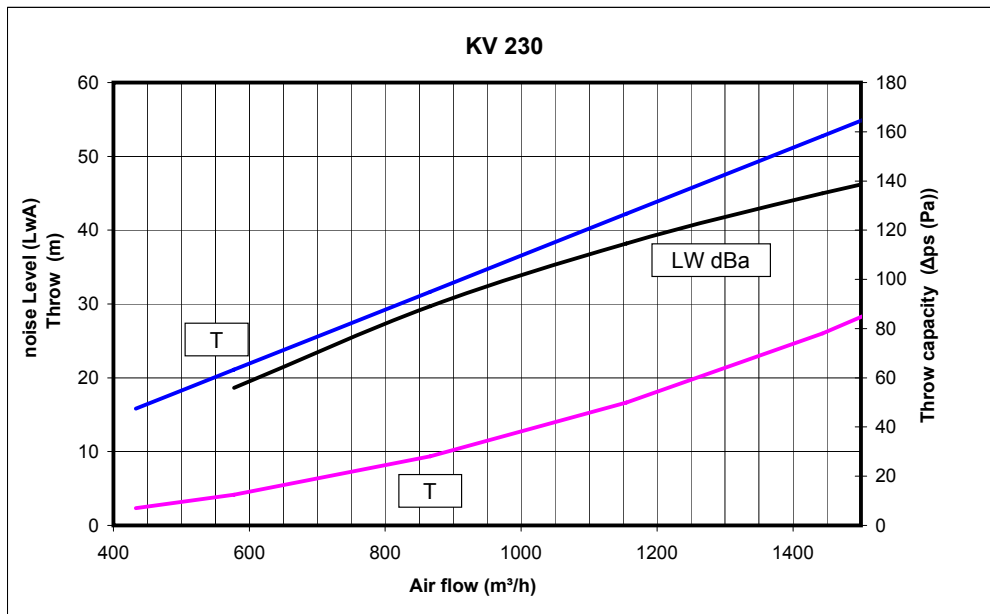
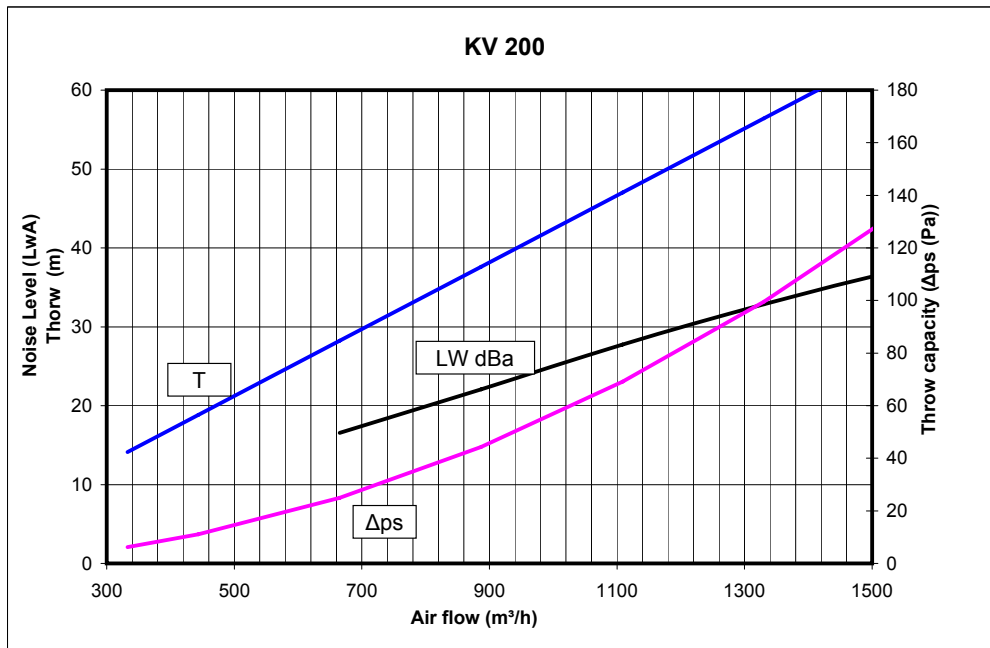
The throw (T) is calculated by the terminal speed of 0.30 m/s in isothermal conditions.



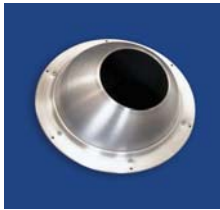
**HIGH INDUCTION LONG THROW DIFFUSERS
FOR DEEP JET**

PERFORMANCES

**KV
SERIES**



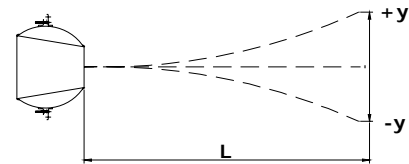
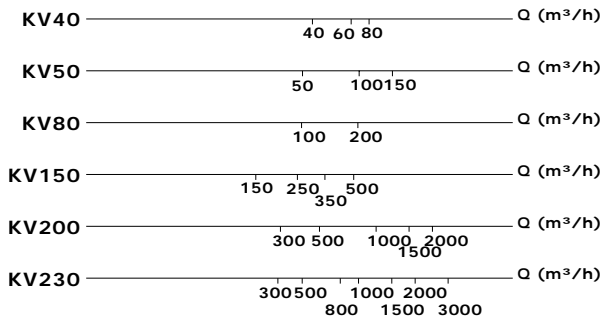
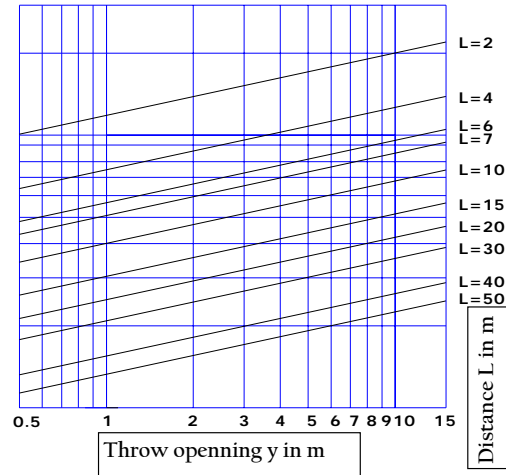
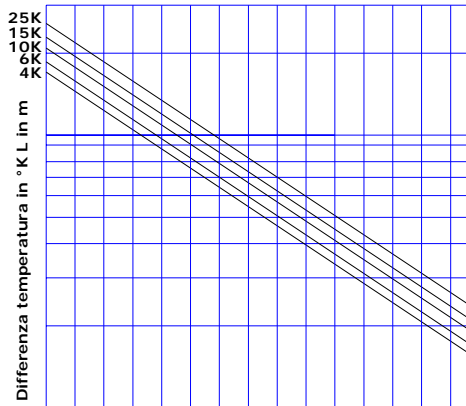
The throw (T) is calculated by the terminal speed of 0.30 m/s in isothermal conditions.



HIGH INDUCTION LONG THROW DIFFUSERS FOR DEEP JET

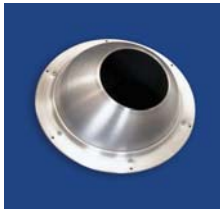
PERFORMANCES

KV
SERIES



ΔK temperature difference between injected air and ambient temperature

The diagram allows to obtain the width of the opening of the throw at the preferred distance from the diffuser. On the line relative to the size of the diffuser, trace a vertical line from the required air flow rate. At the intersection between this line and the line at an angle relative to the temperature difference chosen, trace a second horizontal line. At the intersection between this line and the that at an angle relative to the distance that is of interest, trace a third vertical line. On the diagram scale of the right hand side, it is therefore possible to read the opening of the throw in the required conditions.



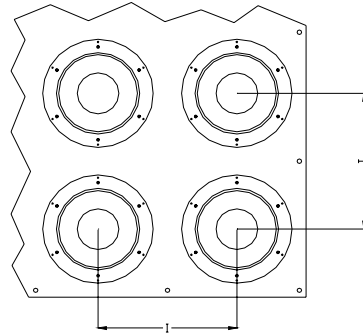
HIGH INDUCTION LONG THROW DIFFUSERS FOR DEEP JET

SERIES
KV

TECHNICAL CHARACTERISTICS

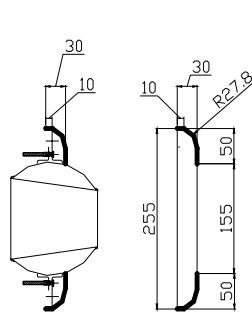
P30...
Diffusers fitted on assembly plate

Model	I min (mm)
KV 40	170
KV 50	210
KV 80	300
KV 150	430
KV 200	550
KV 230	550

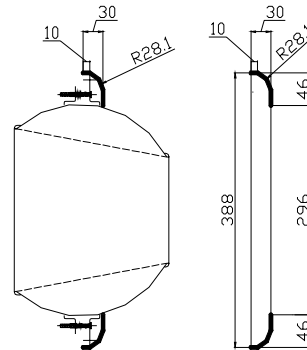


KV-C SCREW COVER FLANGE

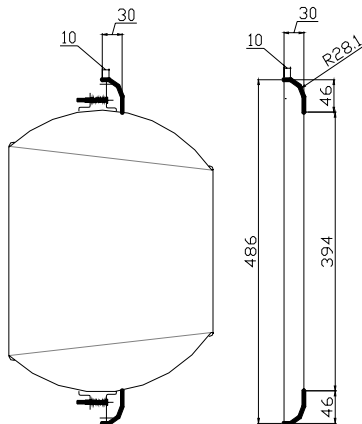
KV-C 80



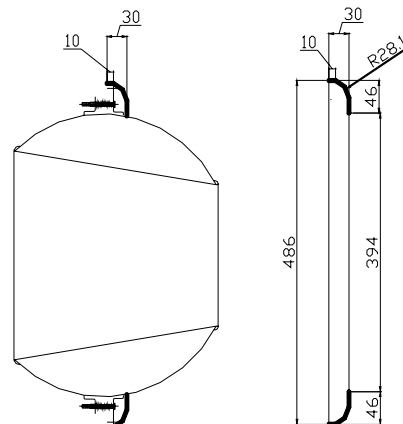
KV-C 150

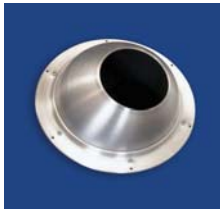


KV-C 200



KV-C 230

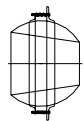
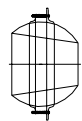
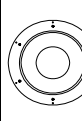
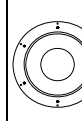
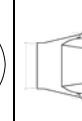
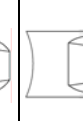






HIGH INDUCTION LONG THROW DIFFUSERS FOR DEEP JET

CODES AND ACCESSORIES

KV
SERIES

Nominal sizes								
DIAMETER	KV .. Jet with flange and counterflange	KVR .. Jet with flange and counterflange painted RAL 9010	KV1 .. Jet with flange and counterflange with automatism for motor	KV1R .. Jet with flange and counterflange RAL 9010 with automatism for motor	KV-RF Coupling for flexible duct	KV-RC Coupling for mounting to circular channel	KV-C Screws cover flange	KVR-C Screws cover flange RAL 9010
40	X	X			X	X		
50	X	X			X	X		
80	X	X			X	X	X	X
150	X	X	X	X	X	X	X	X
200	X	X	X	X	X	X	X	X

KV Jet
 R Painting RAL 9010
 I Diffuser adapted to mount automatism
 KV-RF Coupling for flexible duct
 KV-RC Coupling for circular channel
 KV-C Screws cover flange
 KVR-C Screws cover flange RAL 9010

Example: KV 1 100 Diffuser adapted to mount automatism diameter 100 mm.